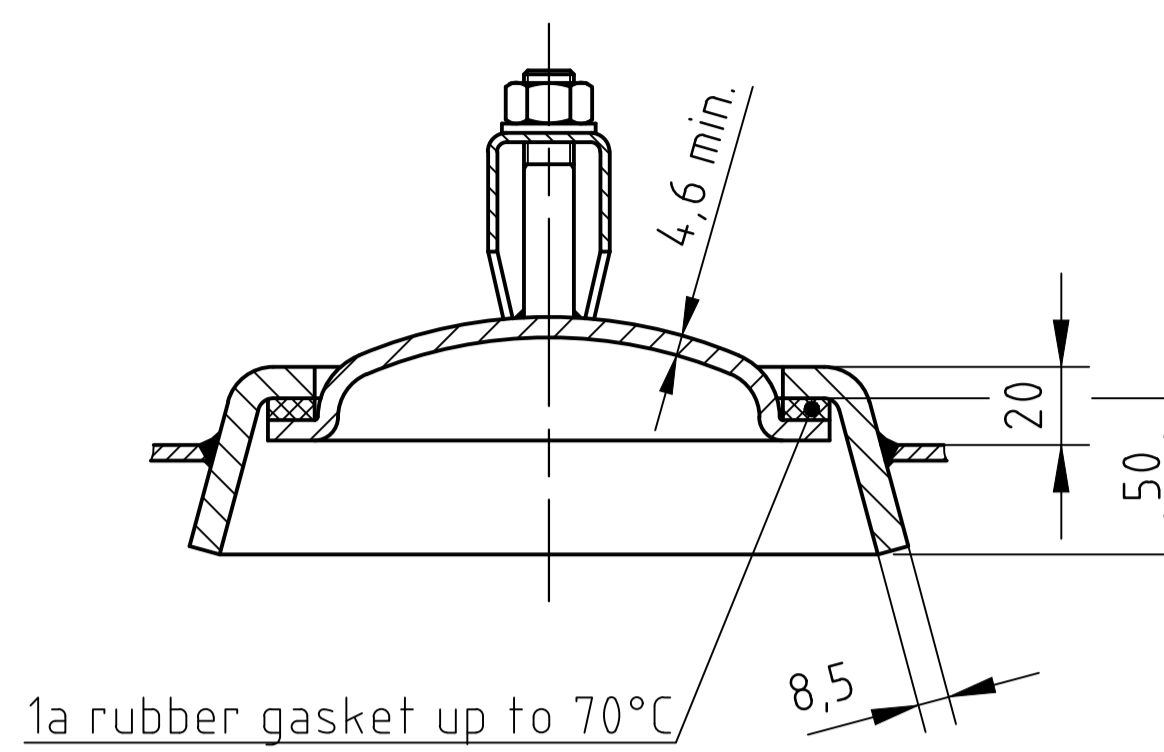
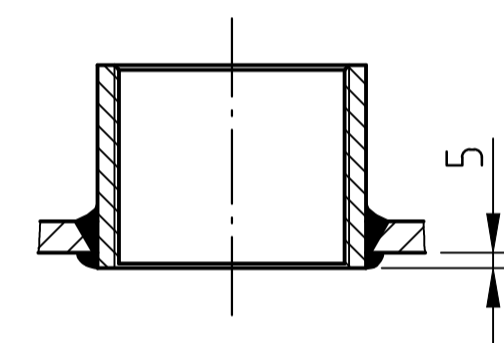


OAB 51 - handhole lock 100/150
tested components

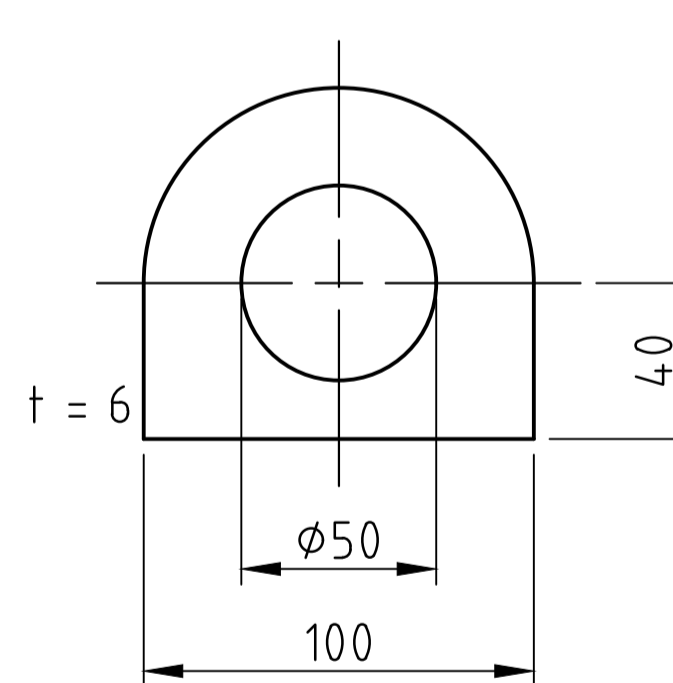


1a rubber gasket up to 70°C

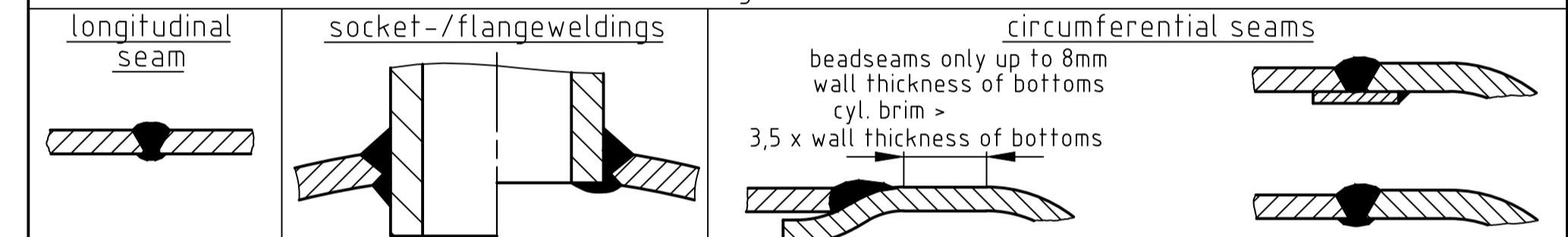
socket welding
drain and plug socket
inside flush



carrier eye



SEAMS (unless otherwise indicated on drawing):



pressure variation :

pressure swing 0-16 bar max. operations 1.000

infinite operation of pressure swing within 20% of 16 bar

operational characteristics / calculation characteristics :

volume V (litre) : 500
max. working pressure PS (bar) : 16
test pressure PT (bar) : 22,88
min. working temp. TS (°C) : -20
max. working temp. TS (°C) : 50
fluid : compressed air / nitrogen (fluid group 2)
location : inside and outside building possible

coating :

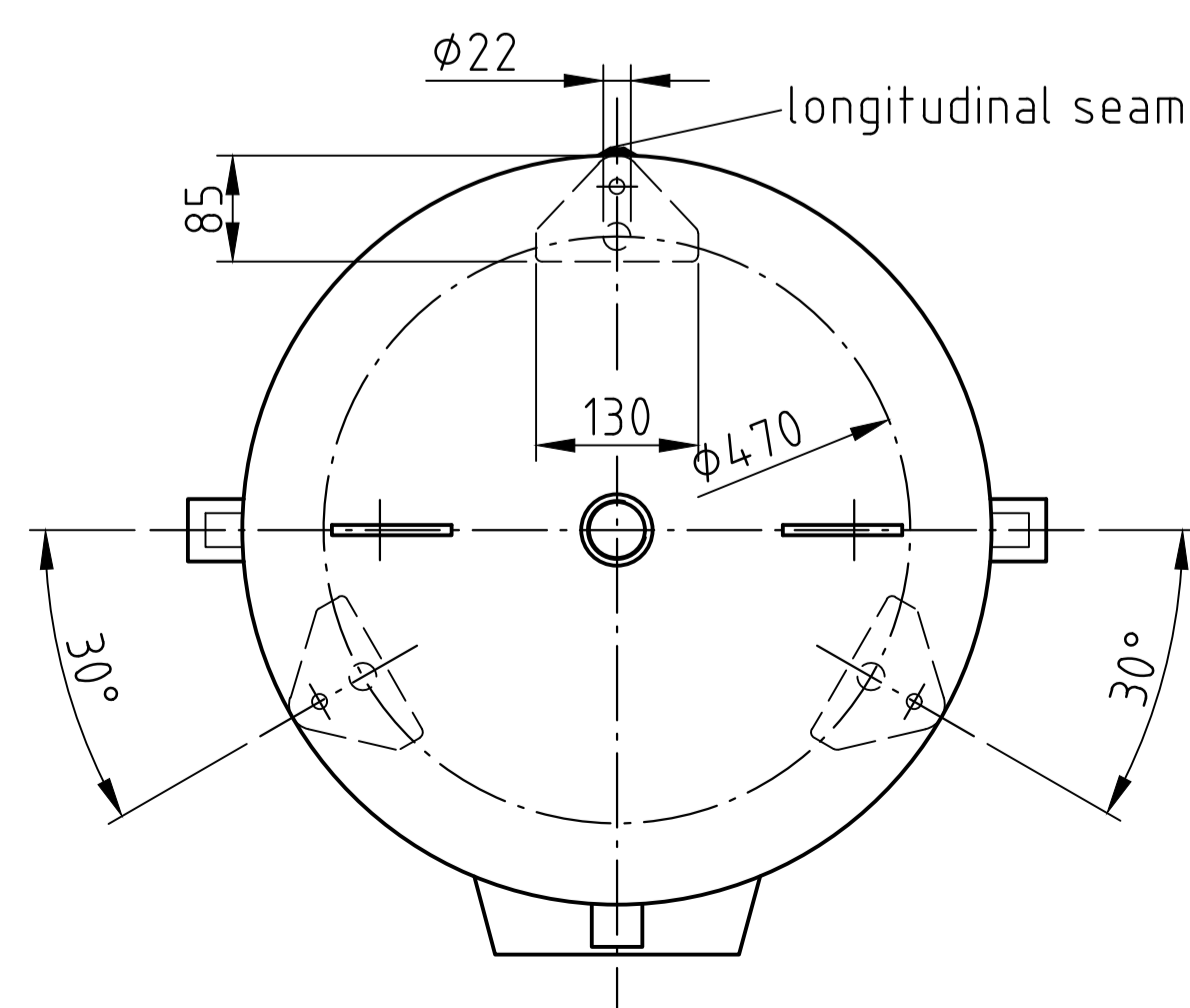
inside : raw or: inside : hot dip galvanized
outside : primed (if customer wishes lacquered) or: outside : hot dip galvanized

manufacturing and testing

acc. to PED 2014 / 68 / EU - AD 2000

conformity benchmark :

fluid group : 2 categorie : IV
diagram : 2 module : H1



scale:	1:12.5
our no.:	-
order no.:	-
used for:	M+B Standardvessel
weight:	ca.180 kg
sheet:	1
of sheet:	1
date of plot:	16.06.2015
file:	ENG-010730

		date		name	
compl.	16.06.2015	CW			
appr.	16.06.2015	SW			
follow protection mark acc. DIN 34					

description:		revision:	
pressure vessel upright 500 l 16 bar		A	
drawing no.:		date of revision:	
MB 030603-2.500/E		16.06.2015	
drawing no. of design inspection:		revision only on CAD	
MB 030603-2			