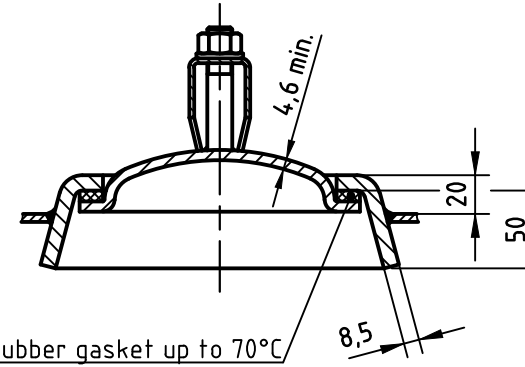
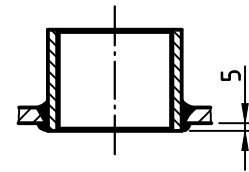


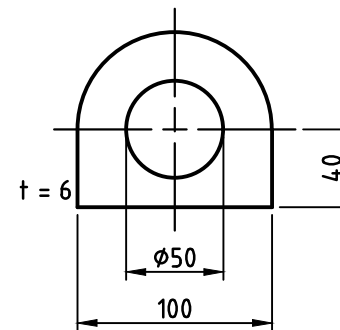
OAB 51 - handhole lock 100/150
tested components



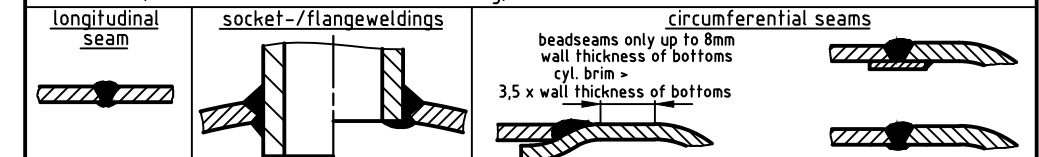
socket welding
drain and plug socket
inside flush



carrier eye



SEAMS (unless otherwise indicated on drawing):



pressure variation :

pressure swing 0-16 bar max. operations 1.000

infinite operation of pressure swing within 20% of 16 bar

operational characteristics / calculation characteristics :

volume V (litre)	: 750
max. working pressure PS (bar)	: 16
test pressure PT (bar)	: 22,88
min. working temp. TS (°C)	: -20
max. working temp. TS (°C)	: 50
fluid	: compressed air / nitrogen (fluid group 2)
location	: inside and outside building possible

coating :

inside : raw
outside : primed (if customer wishes lacquered) or: inside : hot dip galvanized
outside : hot dip galvanized

manufacturing and testing

acc. to PED 2014 / 68 / EU - AD 2000

conformity benchmark :

fluid group : 2
diagram : 2
categorie : IV
module : H1

scale:	1:12.5
our no.:	-
order no.:	-
used for:	M+B Standardvessel
weight:	ca.275 kg
sheet:	1
of sheet:	1
date of plot:	16.03.2015
file:	ENG-010733

	date	name
compl.	16.06.2015	CW
appr.	16.06.2015	SW
follow protection mark acc. DIN 34		

description:	
pressure vessel upright 750 l 16 bar	
drawing no.:	revision:
MB 010806-2.750/E	A
drawing no. of design inspection:	date of revision:
MB 010806-1/2; MB 020103-2	16.03.2015
	revision only on CAD